

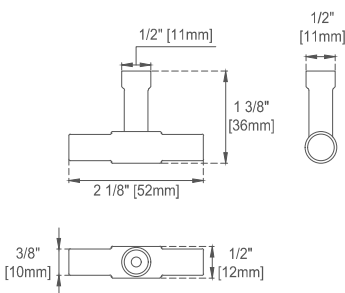
Features and Materials

Solids: BW-Yellow Poplar; LNO-Ash; WLT-Rubberwood
Veneers: LNO-Ash; WLT-Walnut
Panels: Plywood
Installation Type: Floor Standing
Number of Basins: One, with Optional 3cm Top
Vanity Top Included: NO, Optional 3cm Tops Available with Sinks
Basins Included: NO
Overflow: Yes, Front Facing
Number of Doors: Two
Number of Drawers: Three
Number of Tip Outs: One
USB/Power Component: YES (ETL5011080)
Cord Length: 6'6"
Bamboo Storage Tray: YES
Assembly Type: Installation of Optional 3cm Top with Sink
Drawer Box Material and Construction: 12mm Plywood/English Dovetail Joinery
Hardware Material and Finish: Zinc Alloy in Champagne Brass Color
Fits Drain Hole Size: 1 3/4"
Full Extension, Soft Close Glides
European Soft Close Hinges
Aluminum Laminate Drawer Liners
Adjustable Levelers

Dimension

Width: 59-7/8"
Depth: 23-1/2"
Height: 32-7/8"
Rough-In Height: 21-1/2"

EDWARD MARTIN



Technical drawing of a double door assembly. The overall width is 59 7/8" [1520mm]. The overall height is 80 1/2" [2045mm]. The door is divided into two main sections, each 22 1/2" [571mm] wide. The top section is 4 1/8" [104mm] high. The bottom section is 18 1/4" [464mm] high. The door is shown in a closed position, with the handle and lock mechanism visible on the right side. The drawing includes dimensions for the door frame, the door panels, and the hardware.

Dimension	Value (Inches)	Value (Millimeters)
Overall Width	59 7/8"	1520mm
Overall Height	80 1/2"	2045mm
Top Section Height	4 1/8"	104mm
Bottom Section Height	18 1/4"	464mm
Door Panel Width (Each)	22 1/2"	571mm
Door Panel Height (Each)	13"	330mm
Door Panel Width (Each)	12 1/8"	307mm
Door Panel Height (Each)	8 3/8"	212mm

Technical drawing of the 60-inch wide cabinet, showing front and side views with dimensions in inches and millimeters.

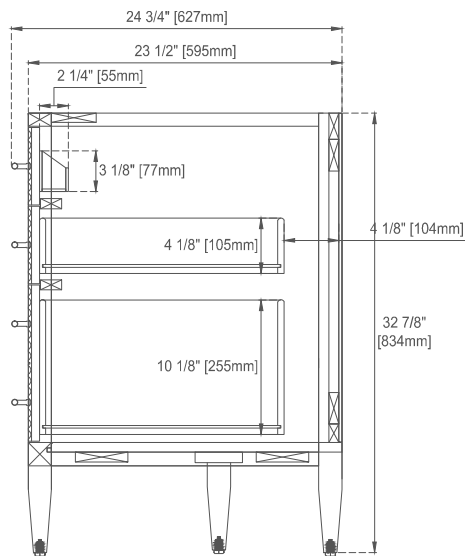
Front View Dimensions:

- Overall Width: 60" [1524mm]
- Left Side Panel Width: 13 5/8" [344mm]
- Central Section Width: 28 7/8" [734mm]
- Right Side Panel Width: 13 5/8" [344mm]
- Top Section Height: 5 7/8" [147mm]
- Middle Section Height: 5 7/8" [147mm]
- Bottom Section Height: 11 5/8" [296mm]
- Overall Height: 32 7/8" [834mm]
- Left Side Panel Depth: 8 3/4" [220mm]
- Right Side Panel Depth: 8 3/4" [220mm]
- Bottom Section Depth: 6 1/2" [165mm]
- Left Side Panel Thickness: 1 3/4" [44mm]
- Central Section Thickness: 27 3/8" [694mm]
- Right Side Panel Thickness: 1 3/4" [44mm]
- Overall Thickness: 27 3/8" [694mm]

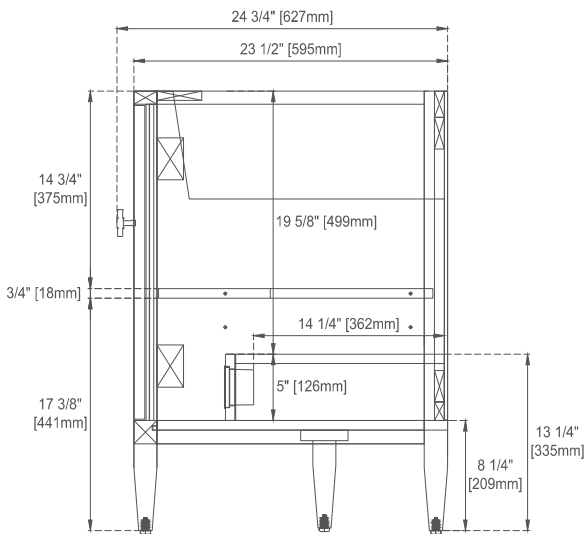
Side View Dimensions:

- Overall Depth: 23 1/2" [595mm]

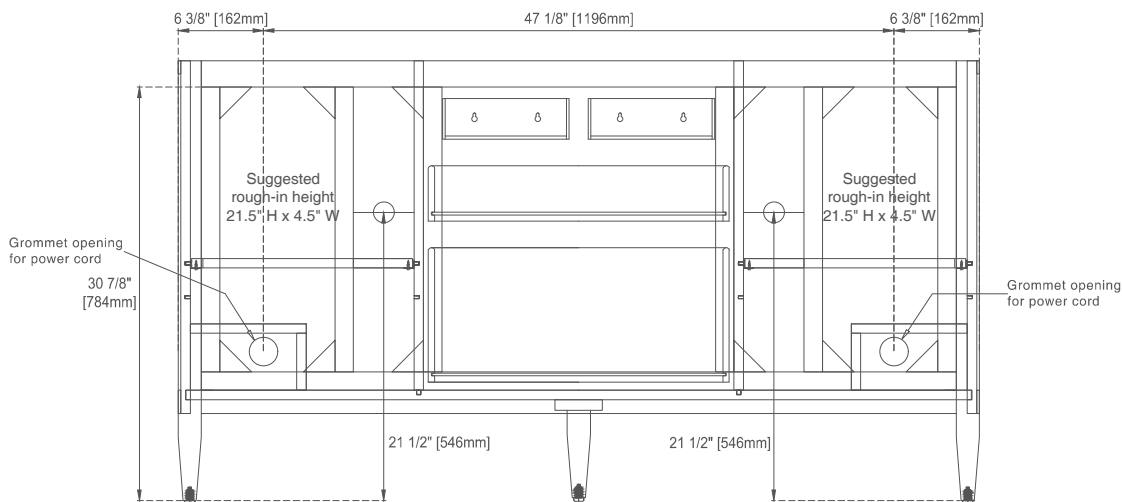
All dimensions and specifications are nominal and may vary. Use actual products for accuracy in critical situations. Diagrams are of cabinets only. Optional Countertops and sinks are not shown.



Side View 1



Side View 2



Back View

All dimensions and specifications are nominal and may vary. Use actual products for accuracy in critical situations. Diagrams are of cabinets only. Optional Countertops and sinks are not shown.