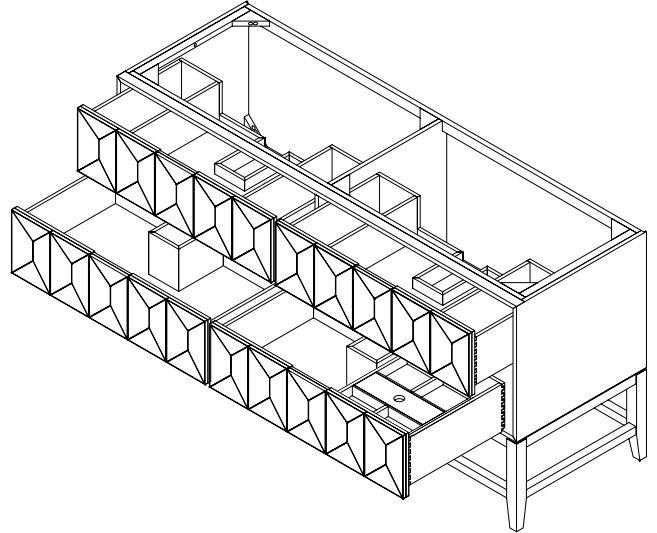
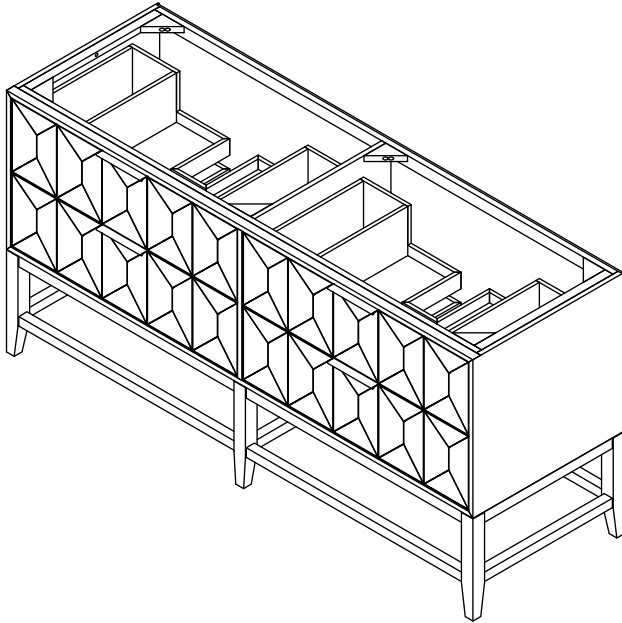


# 72" Gwen Double Vanity

190.143.0691

EDWARD MARTIN



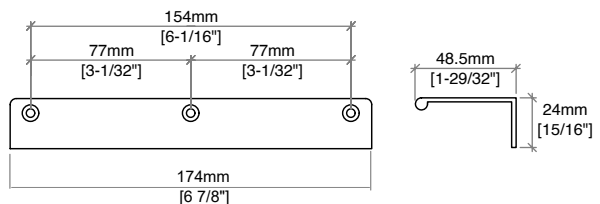
## Details and Features

Solids: Ash  
Veneers: Ash  
Panels: Marine MDF  
Installation Type: Free-standing  
Number of Doors: 0  
Number of Drawers: 4  
Top Drawers: Left and Right Storage Compartments and center U-shaped tray style storage underneath the sink areas  
Bottom Drawers: U-Shaped drawers to accommodate plumbing  
Assembly Required: No  
Removable organizer with aluminum laminate liner  
Drawer Boxes: Ash veneer over Marine MDF  
English Dovetail joinery  
Aluminum Laminate Drawer Liners  
Hardware Finish: Champagne Brass  
Full Extension, Soft Close Glides  
Vanity Top: Not Included – Optional 3cm Tops available  
Number of Basins: 2  
(included with optional countertop purchase)

## Dimensions

Width: 71-9/16" (1817mm)  
Depth: 23-1/4" (591mm)  
Height: 34-13/16" (884 mm)  
Rough-In: 21-11/16" (551mm)

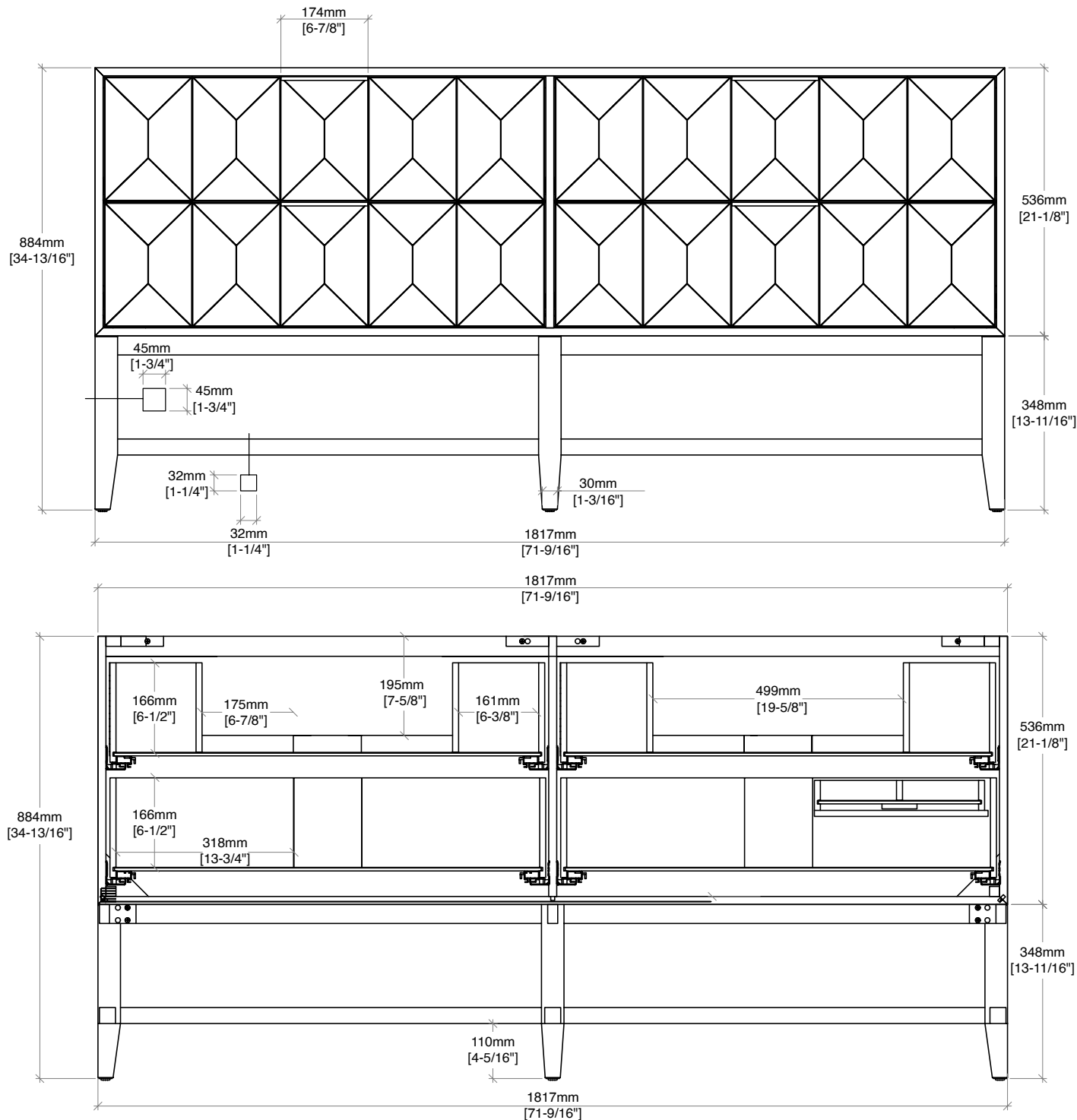
## Drawer Edge Pulls



# 72" Gwen Double Vanity

EDWARD MARTIN

190.143.0691

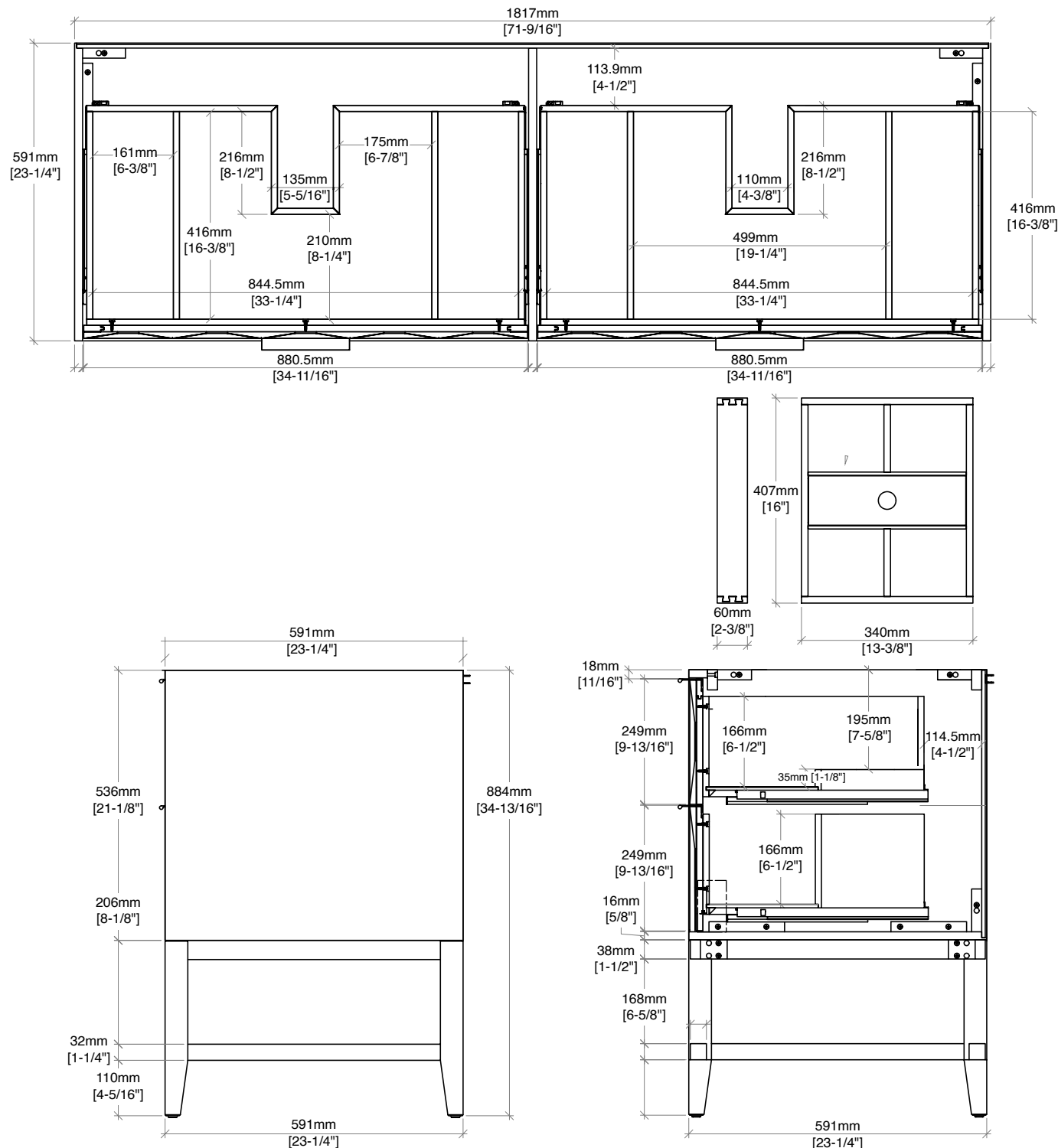


All dimensions and specifications are nominal and may vary. Use actual products for accuracy in critical situations. Diagrams are of cabinets only. Optional Countertops and sinks are not shown.

# 72" Gwen Double Vanity

190.143.0691

EDWARD MARTIN

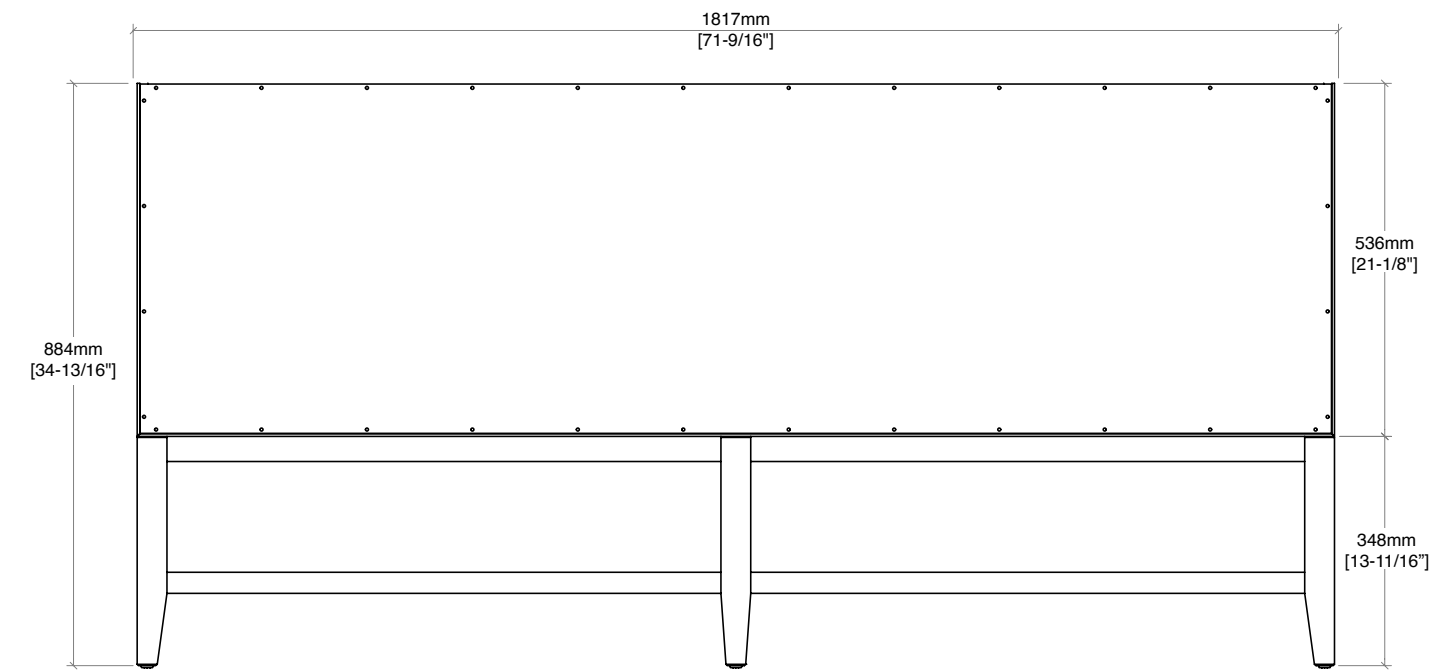


All dimensions and specifications are nominal and may vary. Use actual products for accuracy in critical situations. Diagrams are of cabinets only. Optional Countertops and sinks are not shown.

# 72" Gwen Double Vanity

190.143.0691

EDWARD MARTIN



All dimensions and specifications are nominal and may vary. Use actual products for accuracy in critical situations. Diagrams are of cabinets only. Optional Countertops and sinks are not shown.