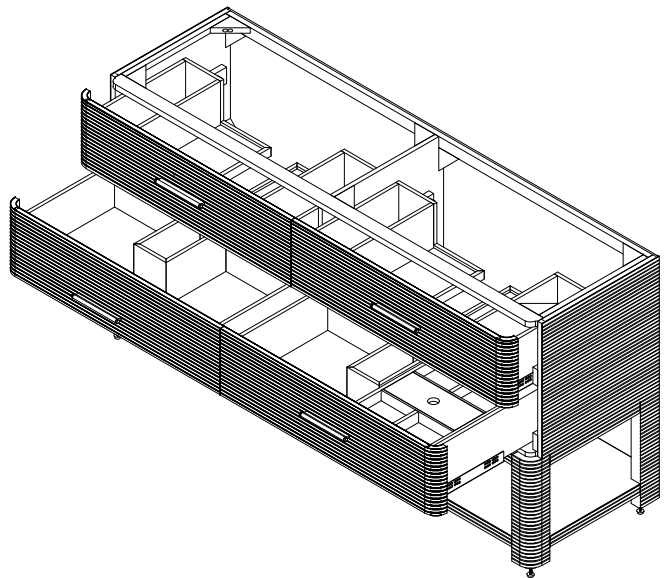
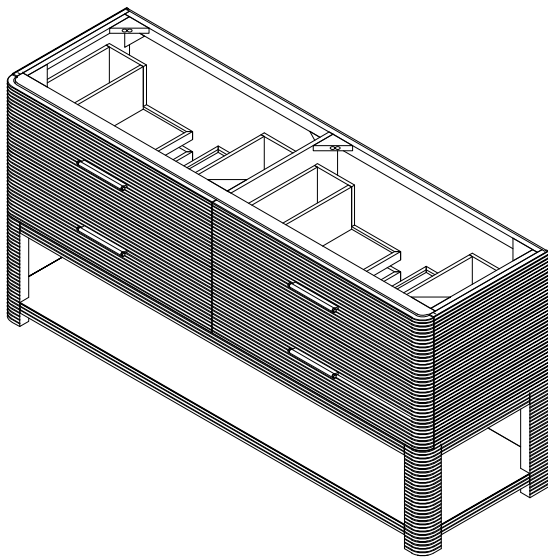


72" Paxton Double Vanity

190.143.0625

EDWARD MARTIN



72" Lucian Double Vanity

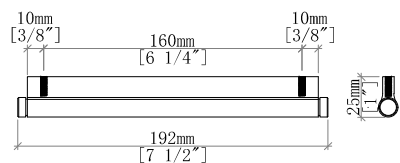
Details and Features

- Solids: Ash
- Veneers: Ash
- Panels: Marine MDF
- Drawer Fronts: Marine MDF ribs with Ash Veneer
- Installation Type: Free Standing
- Number of Basins: One, with Optional 3cm Top
- Vanity Top Included : No, Optional 3cm Tops Available
- Number of Doors: 0
- Number of Drawers: 4
- Top Drawers: Left and Right Storage Compartments and center Ushaped tray style storage underneath the sink area
- Bottom Drawers: U-Shaped drawer to accommodate plumbing
- Assembly Type: Cabinet comes fully assembled
- Removable organizer with aluminum laminate liner
- Drawer Box Material and Construction: Ash veneer over Marine MDF
- English Dovetail joinery
- Aluminum Laminate Drawer Liners
- Hardware Material/Finish: Stainless Steel in Champagne Brass
- Full Extension, Soft Close Glides
- Adjustable levelers

Dimension

- Width: 71-3/4" (1823mm)
- Depth: 21-3/8" (543mm)
- Height: 34-3/4" (884 mm)
- Rough-In: 21-1/2" (546mm)

Drawer Pulls

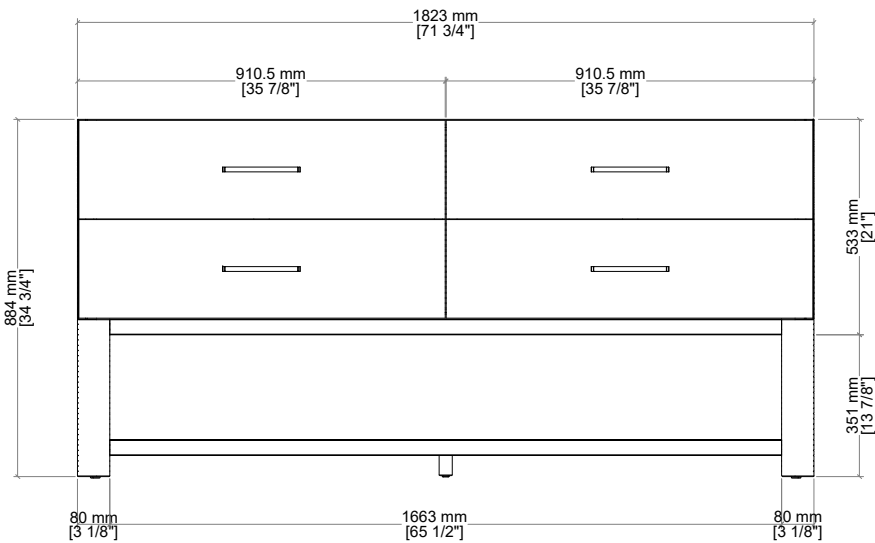
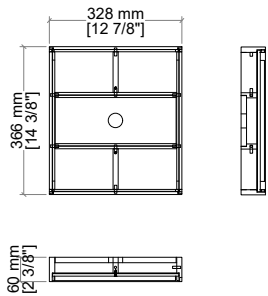


72" Paxton Double Vanity

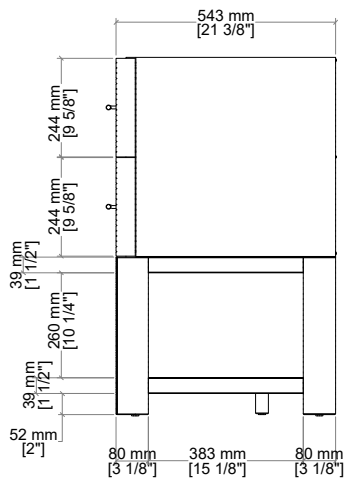
190.143.0625

EDWARD MARTIN

Drawer Organizer



Front View



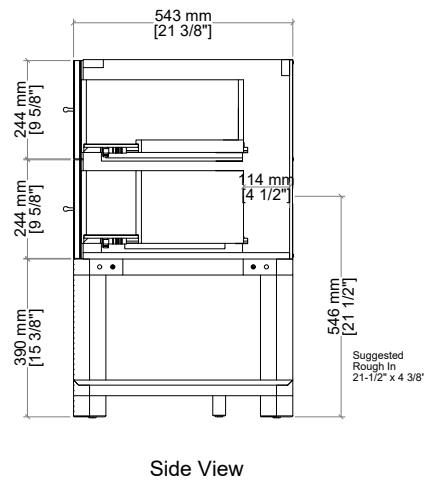
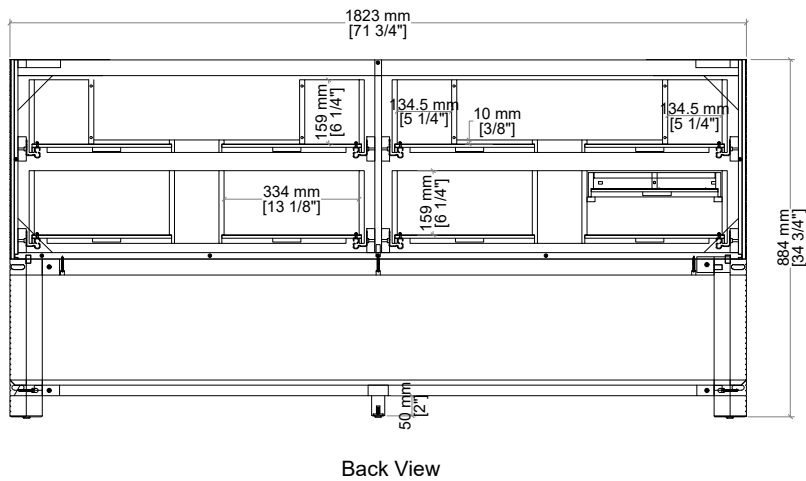
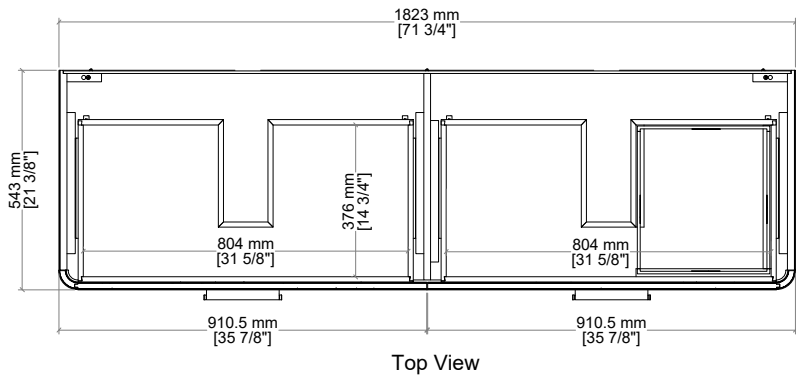
Side View

All dimensions and specifications are nominal and may vary. Use actual products for accuracy in critical situations. Diagrams are of cabinets only. Optional Countertops and sinks are not shown.

72" Paxton Double Vanity

190.143.0625

EDWARD MARTIN



All dimensions and specifications are nominal and may vary. Use actual products for accuracy in critical situations. Diagrams are of cabinets only. Optional Countertops and sinks are not shown.