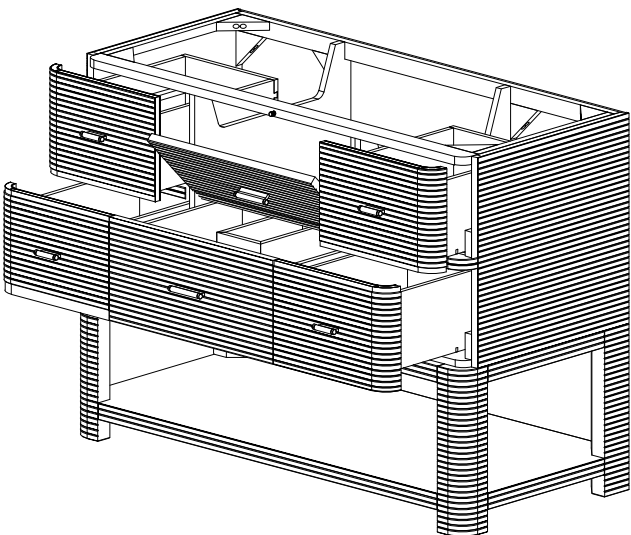
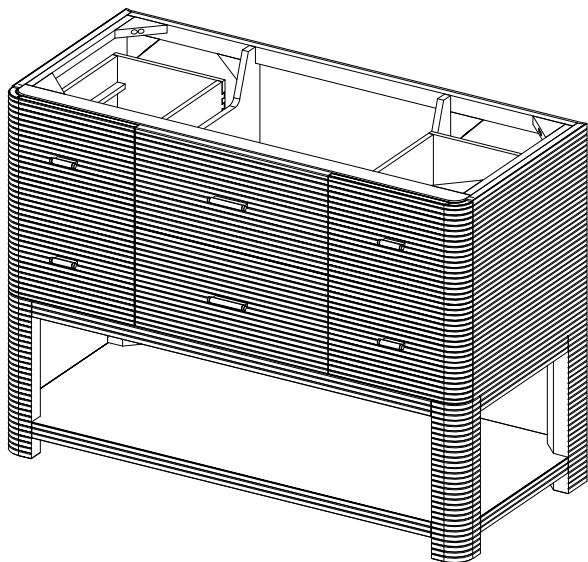


48" Paxton Single Vanity

190.143.0618

EDWARD MARTIN



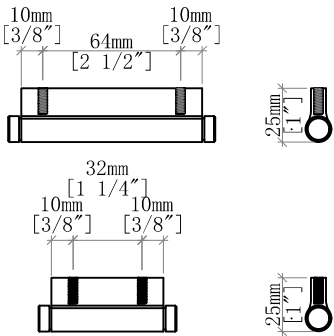
Features and Materials

- Solids: Ash
- Veneers: Ash
- Panels: Marine MDF
- Drawer Fronts: Marine MDF ribs with Ash Veneer
- Installation Type: Free Standing
- Number of Basins: One, with Optional 3cm Top
- Vanity Top Included : No, Optional 3cm Tops Available
- Number of Doors: 0
- Number of Drawers: Five
- Tip Out Style Drawer: One, Top Center, with removable bamboo tray
- Assembly Type: Cabinet comes fully assembled
- Assembly Type: Installation of Optional 3cm Top with Sink
- Removable organizer with aluminum laminate liner
- Drawer Box Material and Construction: Ash veneer over Marine MDF
- English Dovetail joinery
- Aluminum Laminate Drawer Liners
- Hardware Material/Finish: Stainless Steel in Champagne Brass
- Full Extension, Soft Close Glides
- Adjustable levelers

Dimension

- Width: 47-3/4" (1213mm)
- Depth: 21-3/8" (543mm)
- Height: 34-3/4" (884 mm)
- Rough-In: 21-1/2" (546mm)

Drawer Pulls

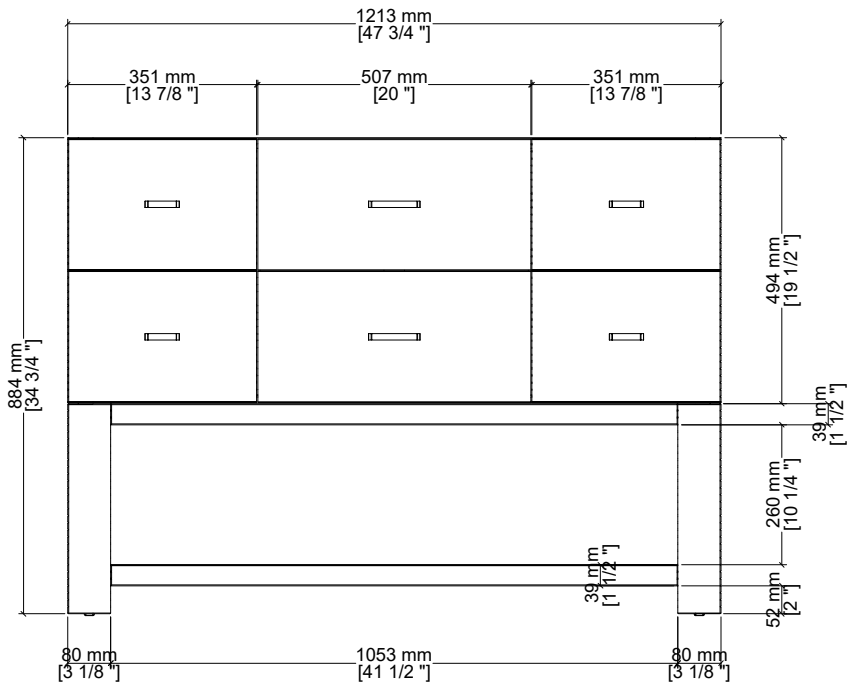
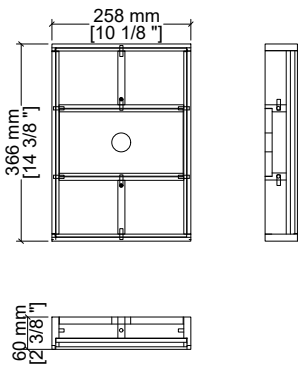


48" Paxton Single Vanity

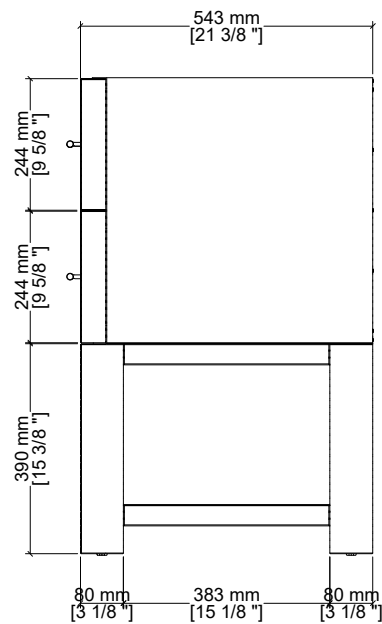
190.143.0618

EDWARD MARTIN

Drawer Organizer



Front View



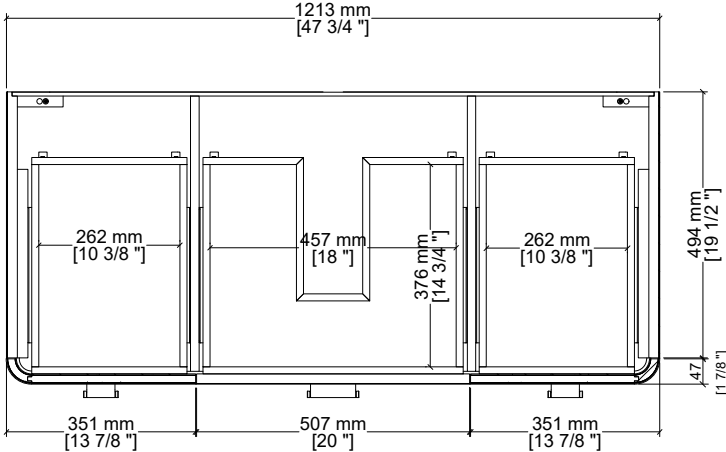
Side View

All dimensions and specifications are nominal and may vary. Use actual products for accuracy in critical situations. Diagrams are of cabinets only. Optional Countertops and sinks are not shown.

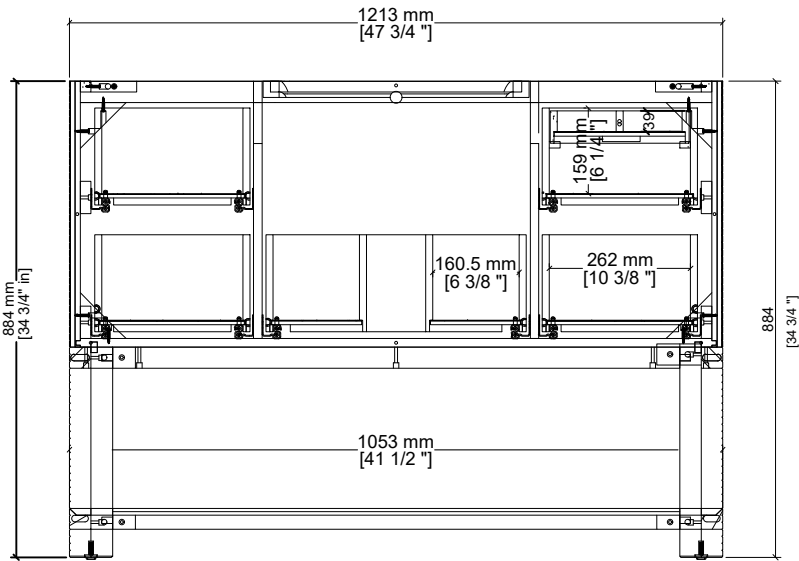
48" Paxton Single Vanity

190.143.0618

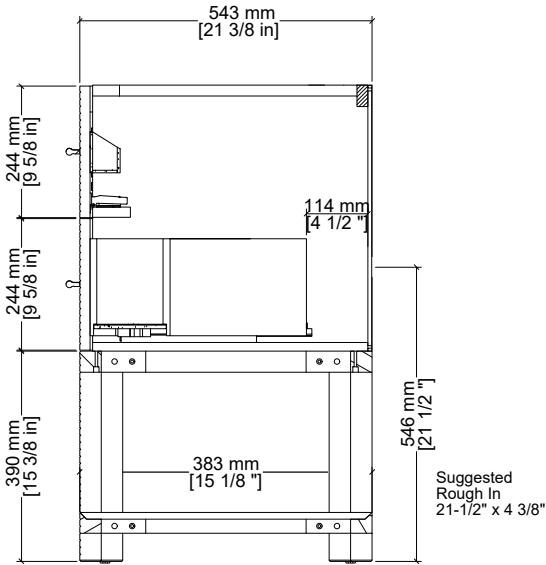
EDWARD MARTIN



Top View



Back View



Side View

All dimensions and specifications are nominal and may vary. Use actual products for accuracy in critical situations. Diagrams are of cabinets only. Optional Countertops and sinks are not shown.