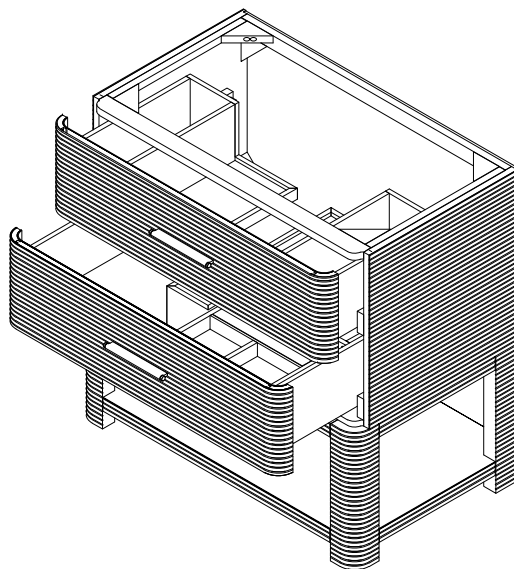
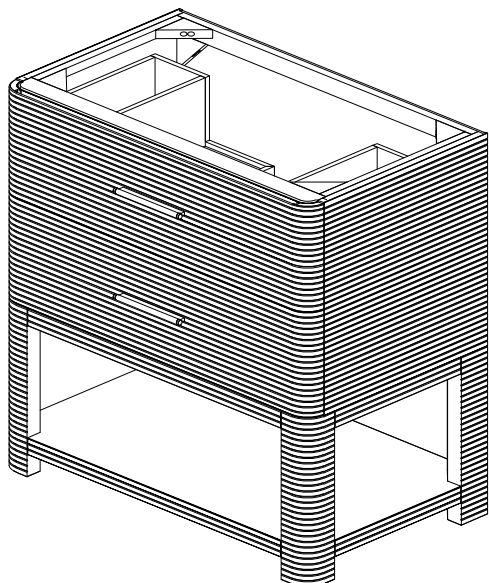


# 36" Paxton Single Vanity

190.143.0611

EDWARD MARTIN



## Features and Material

Solids: Ash

Veneers: Ash

Panels: Marine MDF

Installation Type: Free Standing

Number of Basins: One, with Optional 3cm Top

Vanity Top Included : No, Optional 3cm Tops Available

Number of Doors: 0

Number of Drawers: 2

Top Drawer: Left and Right Storage Compartments and center U-shaped tray style storage underneath the sink area

Bottom Drawer: U-Shaped drawer to accommodate plumbing

Assembly Type: Cabinet comes fully assembled

Assembly Type: Install Drawer Pulls

Assembly Type: Installation of Optional 3cm Top with Sink

Removable organizer with aluminum laminate liner

Drawer Box Material and Construction: Ash veneer over Marine MDF

English Dovetail joinery

Aluminum Laminate Drawer Liners

Hardware Material/Finish: Stainless Steel in Champagne Brass

Full Extension, Soft Close Glides

Adjustable levelers

## Dimension

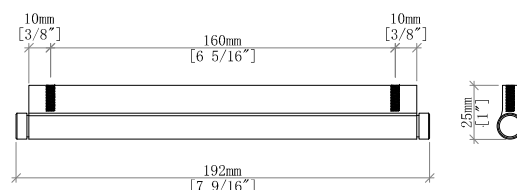
Width: 35-3/4" (908mm)

Depth: 21-3/8" (543mm)

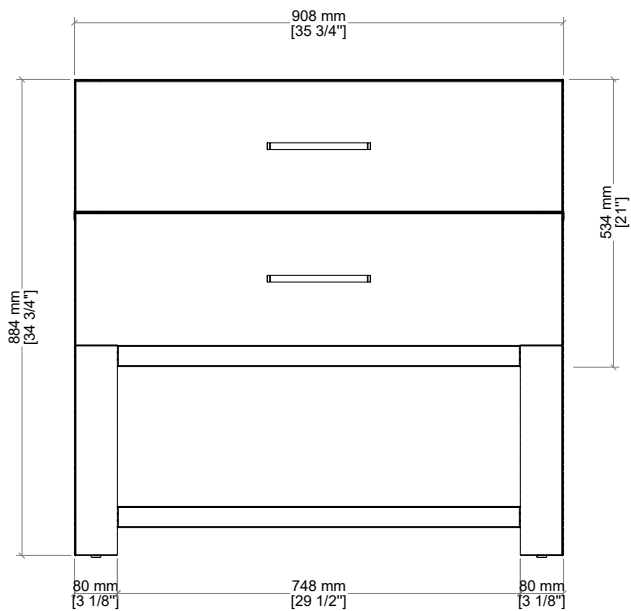
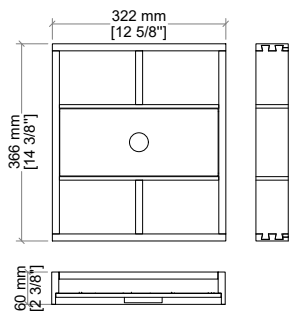
Height: 34-3/4" (884 mm)

Rough-In: 21-1/2" (546mm)

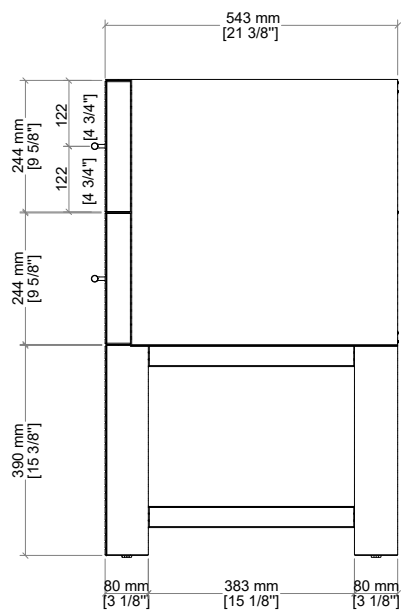
## Drawer Pulls



Drawer Organizer



Front View



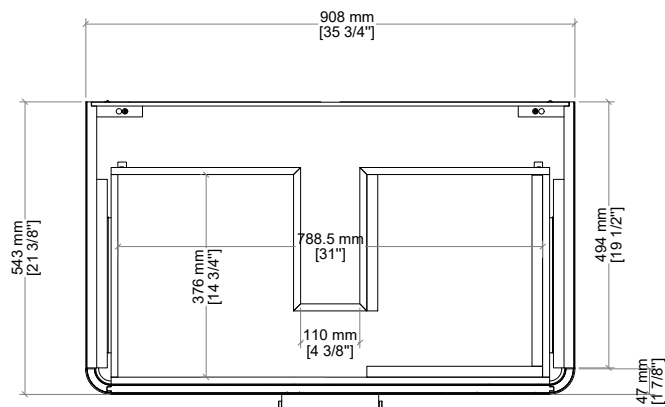
Side View

All dimensions are nominal  
Diagrams are of cabinet only. Optional Countertops and sinks are not shown.

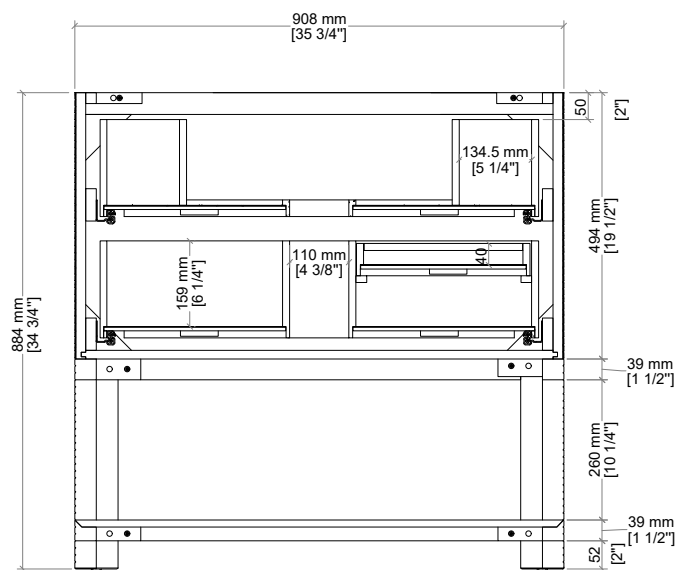
36" Paxton Single Vanity

190.143.0611

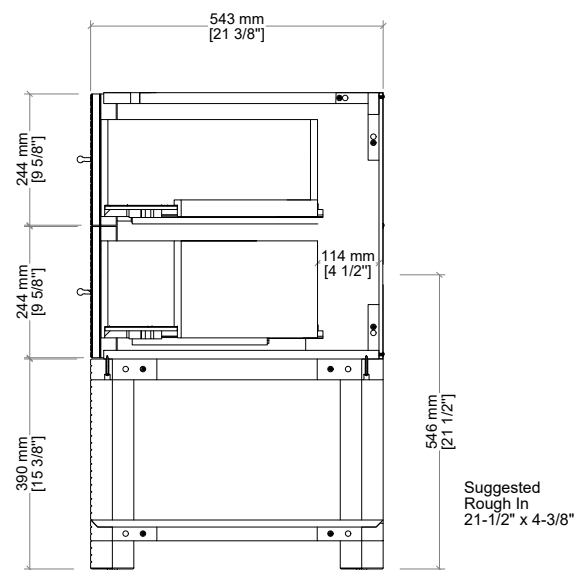
EDWARD MARTIN



Top View



Back View



Side View

All dimensions are nominal  
Diagrams are of cabinet only. Optional Countertops and sinks are not shown.