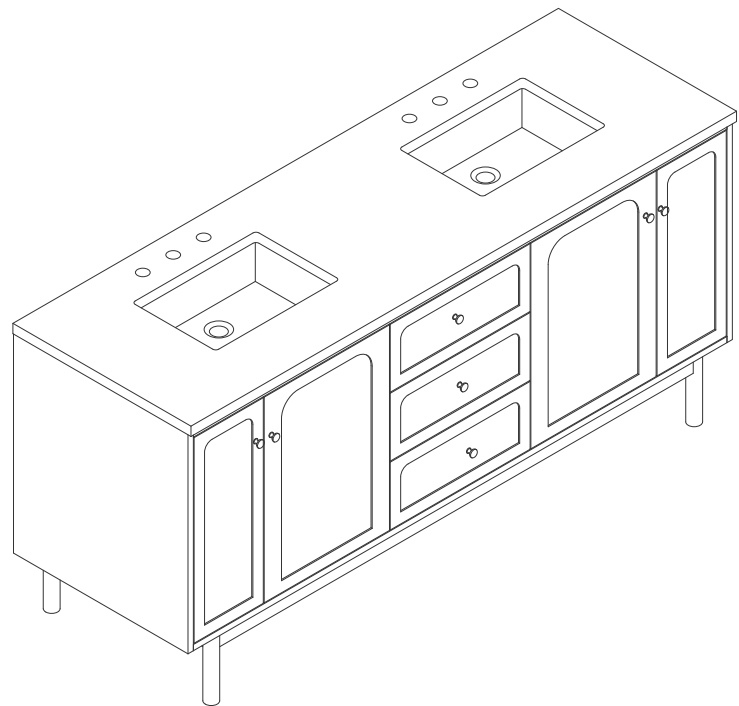


72" ABIGAIL VANITY

EDWARD MARTIN

190.143.0207



Features and Materials

- Solids: Ash and Yellow Poplar
- Veneers: Flat Cut Ash
- Panels: Plywood
- Installation Type: Floor Standing with Wood Base or Wall Mounted
- Number of Basins: Two, with Optional 3cm Top
- Vanity Top Included : NO, Optional 3cm Tops Available with Sinks
- Overflow: Front Facing
- Number of Doors: Four
- Number of Drawers: Five
- USB/Power Component: YES (ETL5011080)
- Cord Length: 6'6"
- Assembly Type: Installation of Optional 3cm Top with Sink
- Assembly Type: Remove Base to Wall Hang (hardware included)
- Bamboo Storage Tray: One
- Drawer Box Material and Construction: 12mm Plywood/English Dovetail Joinery
- Hardware Material and Finish: Zinc Alloy in Champagne Brass
- Fits Drain Hole Size: 1 3/4"
- Full Extension, Soft Close Glides
- European Soft Close Hinges
- Aluminum Laminate Drawer Liners
- Adjustable Levelers

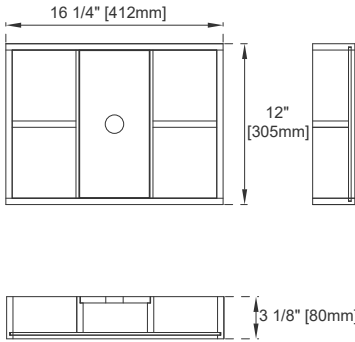
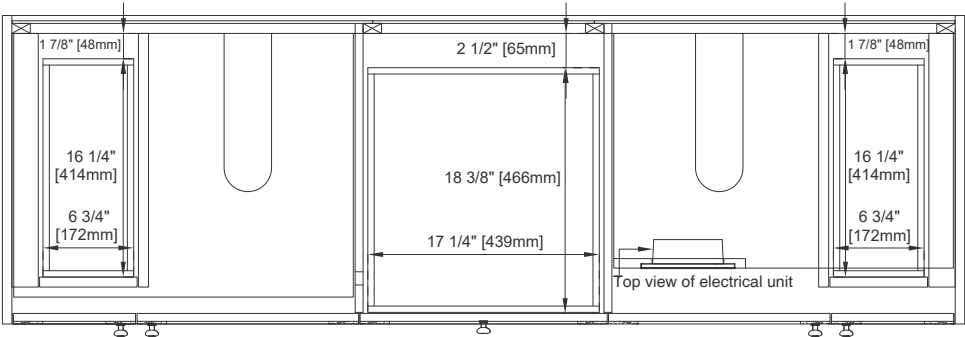
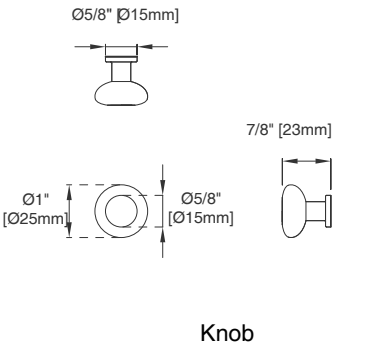
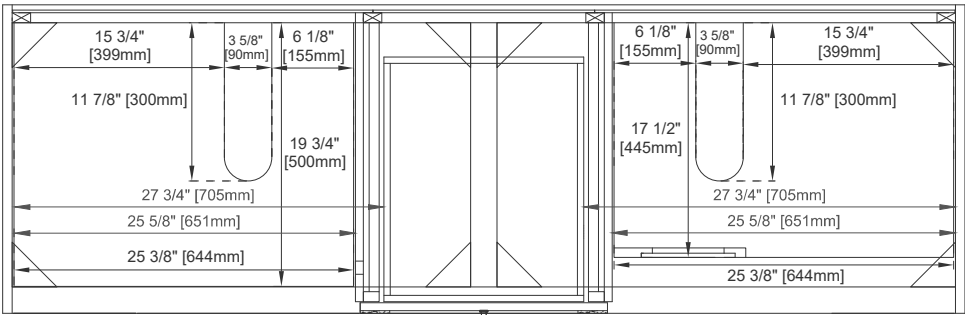
Dimension

- Width: 71-7/8"
- Depth: 23"
- Height: 33"
- Rough-In Height: 21-1/2"

72" ABIGAIL VANITY

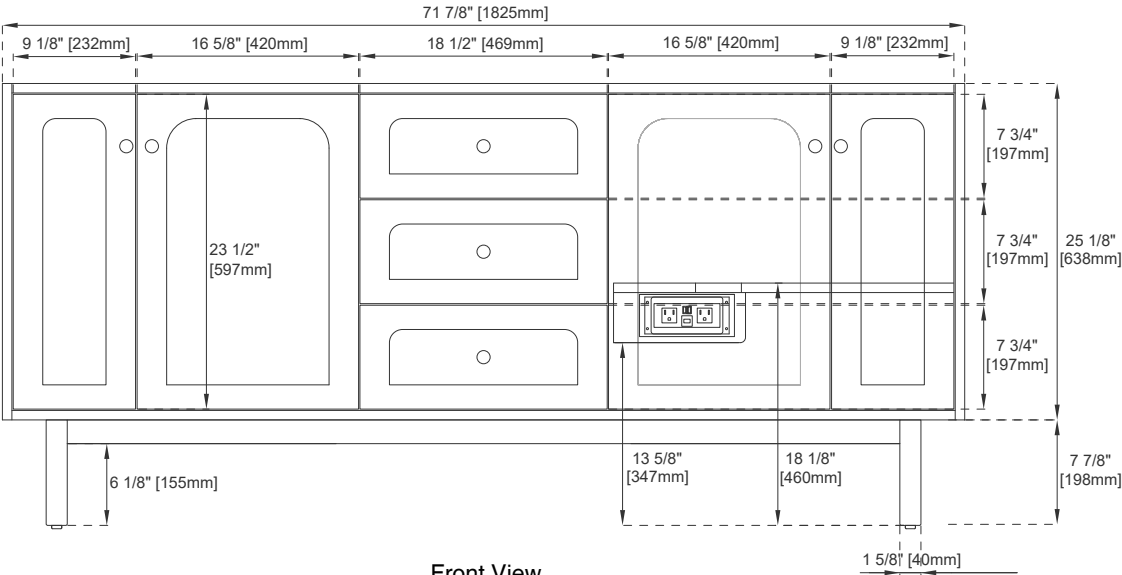
EDWARD MARTIN

190.143.0207



Top View

Bamboo Drawer Organizer



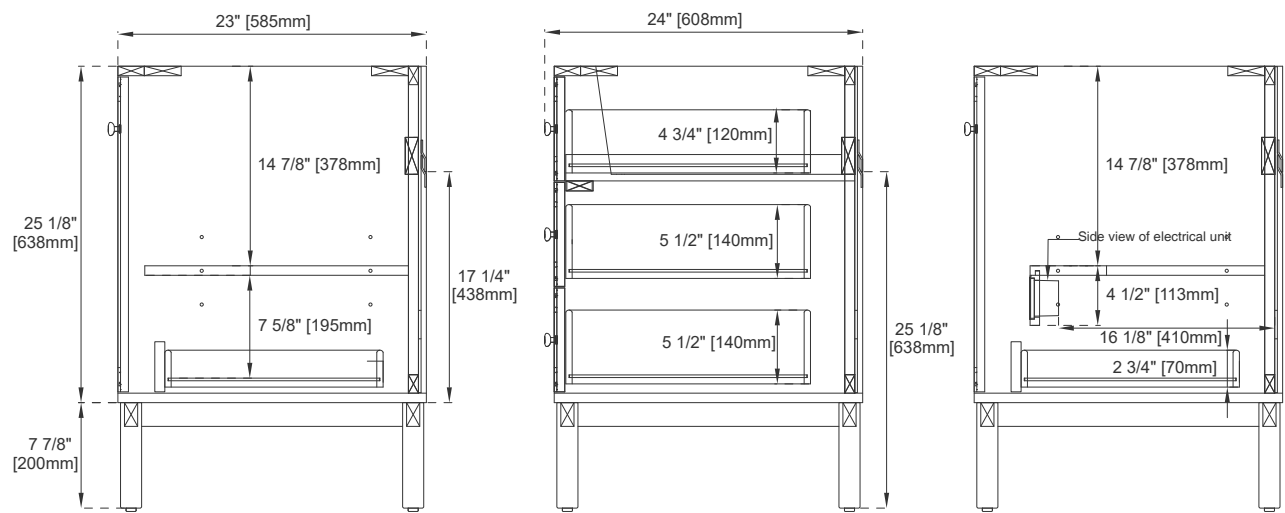
Front View

All dimensions and specifications are nominal and may vary. Use actual products for accuracy in critical situations. Diagrams are of cabinets only. Optional Countertops and sinks are not shown.

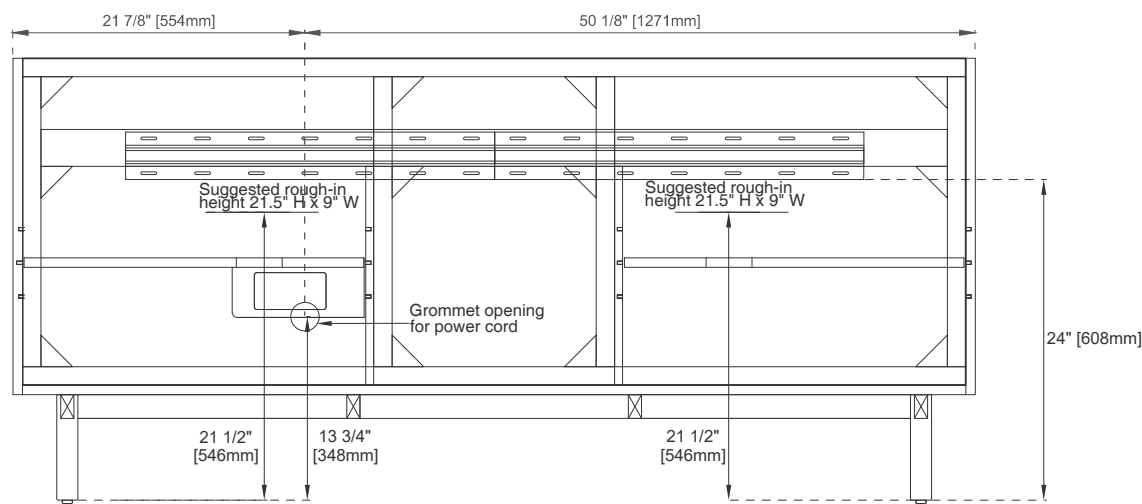
72" ABIGAIL VANITY

EDWARD MARTIN

190.143.0207



Side View



Back View

All dimensions and specifications are nominal and may vary. Use actual products for accuracy in critical situations. Diagrams are of cabinets only. Optional Countertops and sinks are not shown.