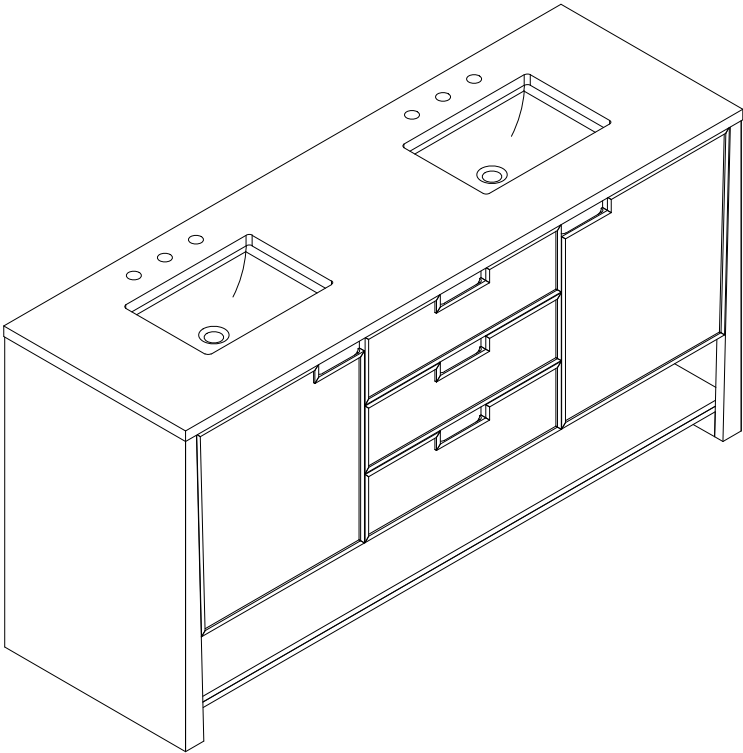


DELILAH 72" DOUBLE VANITY

190.143.0036



Features and Materials

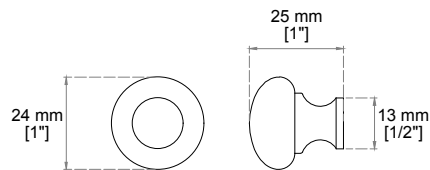
- Solids: Oak
- Veneers: Oak, Birch, Ash
- Panels: Moisture Resistant MDF
- Installation Type: Freestanding
- Number of Basins: Two, With Optional 3cm Top
- Vanity Top Included: No, Optional 3cm Tops Available with Sinks
- Overflow: Yes, Front Facing
- Number of Doors: Two
- Number of Drawers: Five
- Removable Organizer with Aluminum Laminate Liner
- Drawer Box Material and Finish: Oak, Birch, Ash Veneers over Moisture Resistant MDF
- English Dovetail Joinery
- Aluminum Laminate Drawer Liners
- USB/Power Component: Yes, (ETL5011080)
- Cord Length: 6'6
- Assembly Type: Installation of Optional 3cm Top with Sink
- Assembly Type: Cabinet comes fully assembled
- Hardware Material and Finish: Stainless Steel in Champagne Brass
- Fits Drain Hole Size: 1 3/4"
- Full Extension, Soft Close Glides
- European Soft Close Hinges
- Adjustable Levelers

Dimension

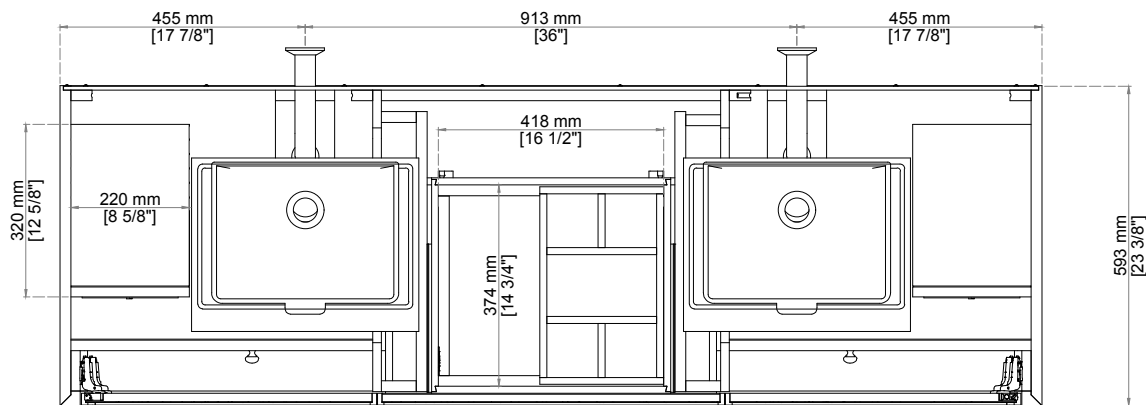
- Width: 71-3/4"
- Depth: 23-3/8"
- Height: 34-3/4"
- Rough-In Height: 21-1/2"

DELILAH 72" DOUBLE VANITY

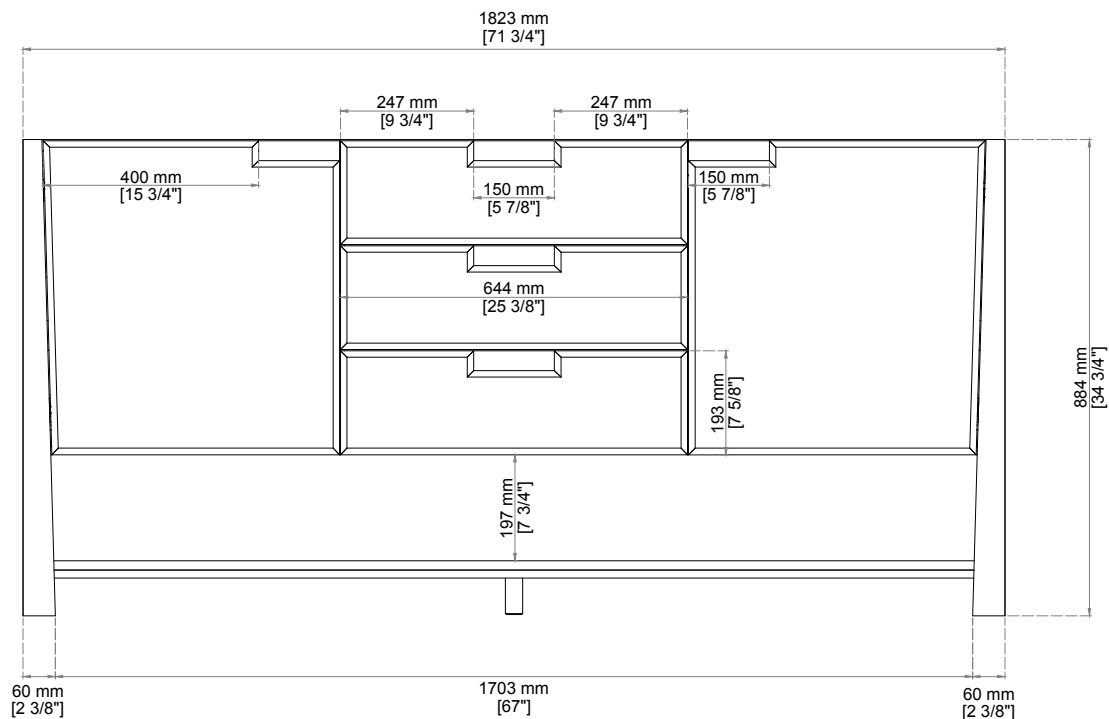
190.143.0036



Knob



Top View

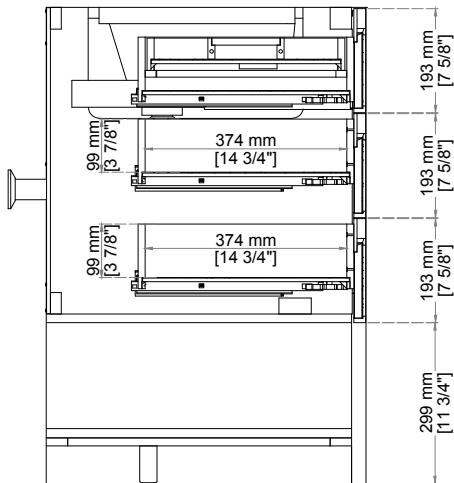


Front View

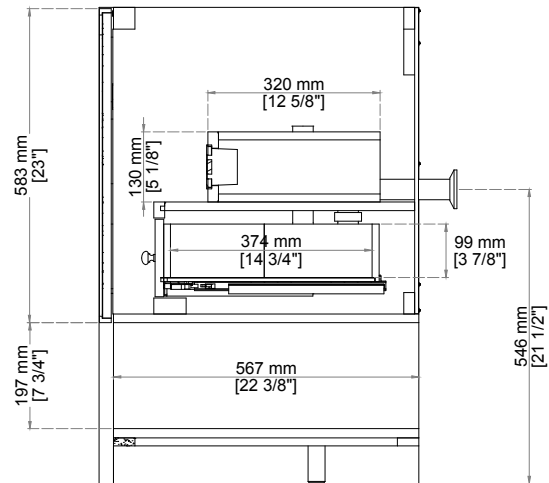
All dimensions and specifications are nominal and may vary. Use actual products for accuracy in critical situations. Diagrams are of cabinets only. Optional Countertops and sinks are not shown.

DELILAH 72" DOUBLE VANITY

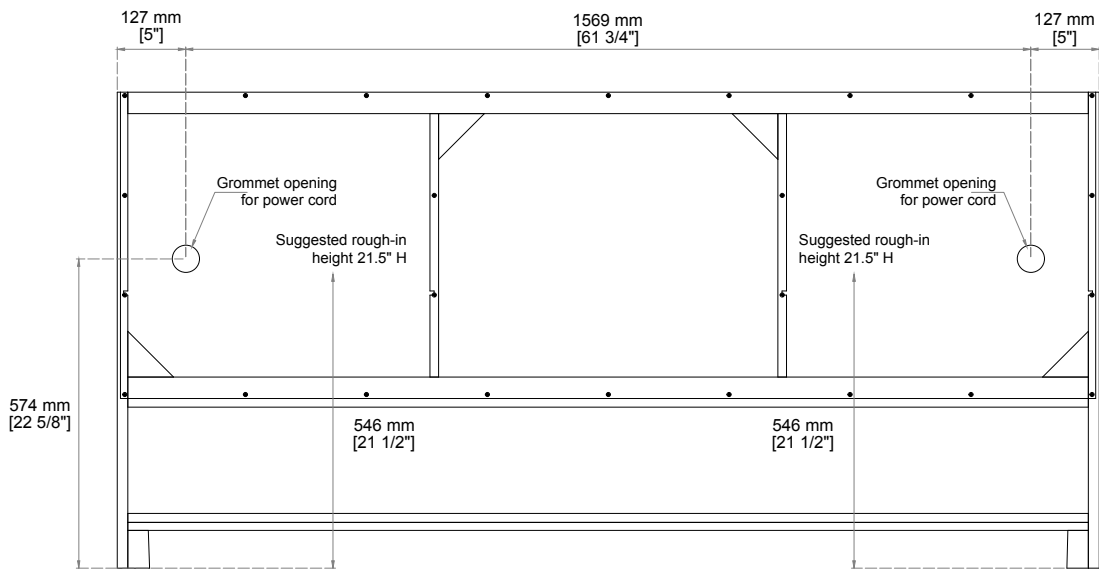
190.143.0036



Side View 2



Side View 1



Back View

All dimensions and specifications are nominal and may vary. Use actual products for accuracy in critical situations. Diagrams are of cabinets only. Optional Countertops and sinks are not shown.